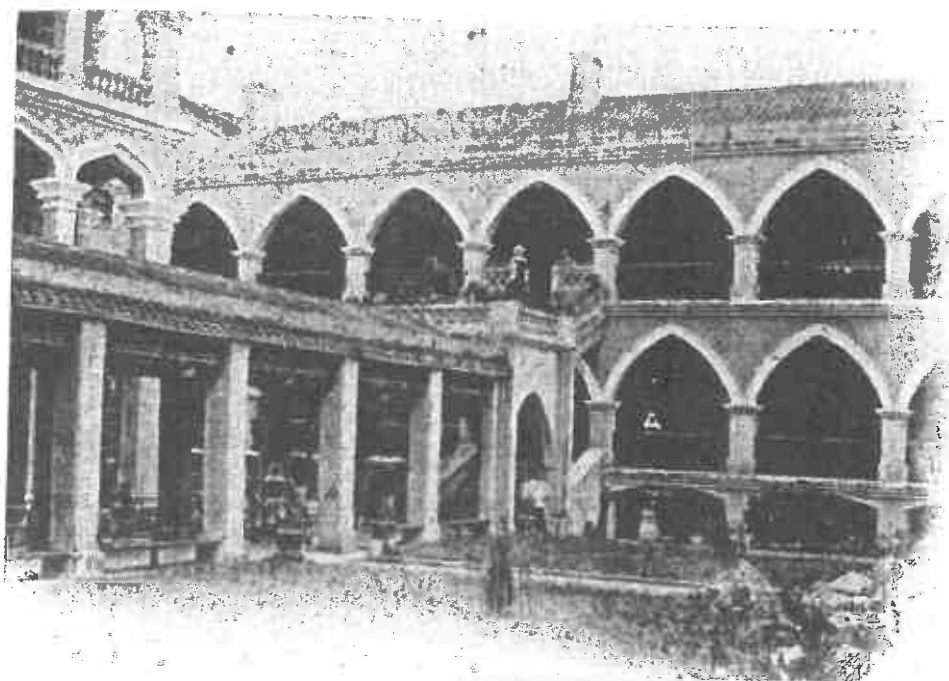
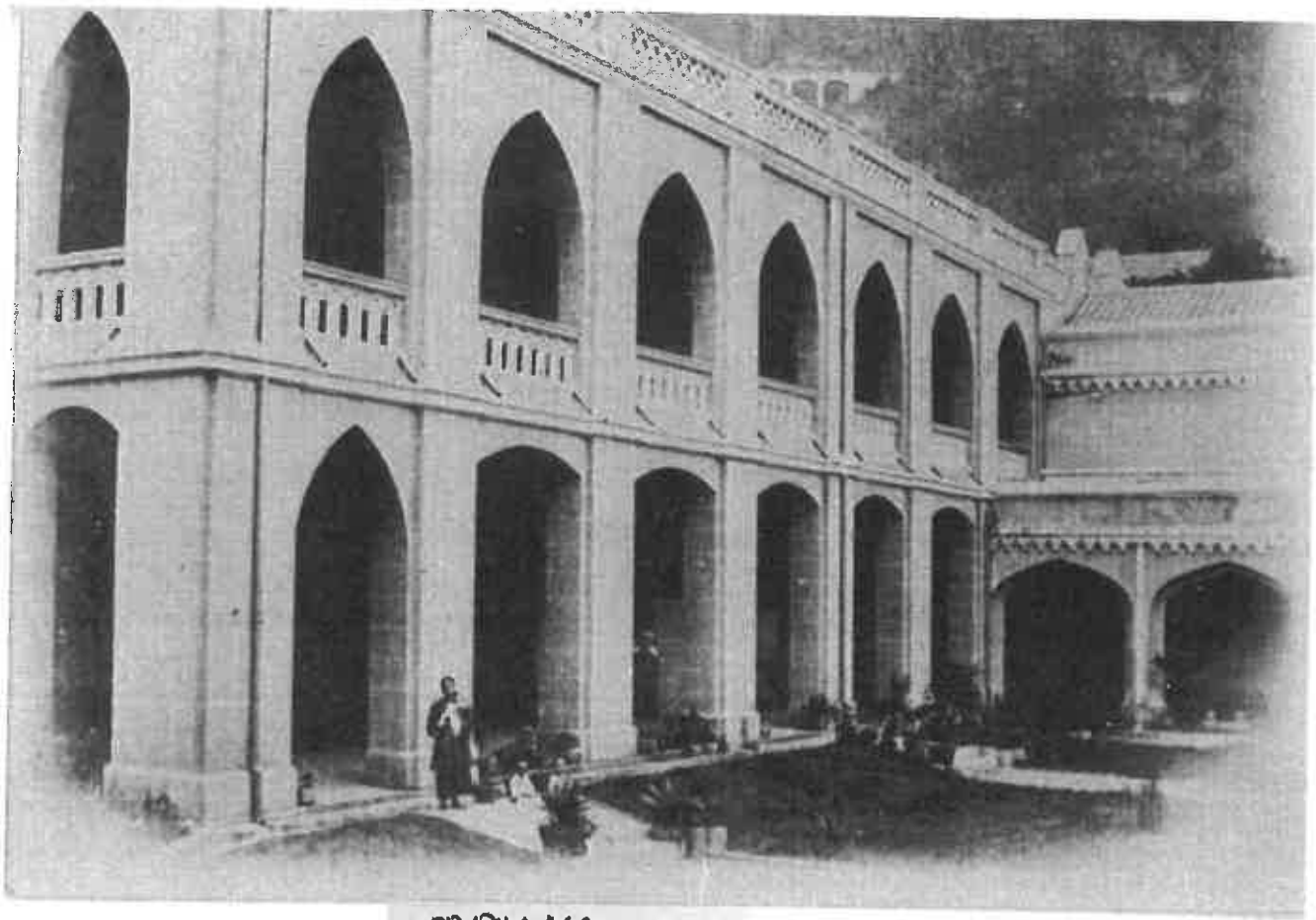


Chapel facing Queen's Rd East. It is connected to the Sisters' Convent by a covered walk. (1871)
On the right is the orphanage.

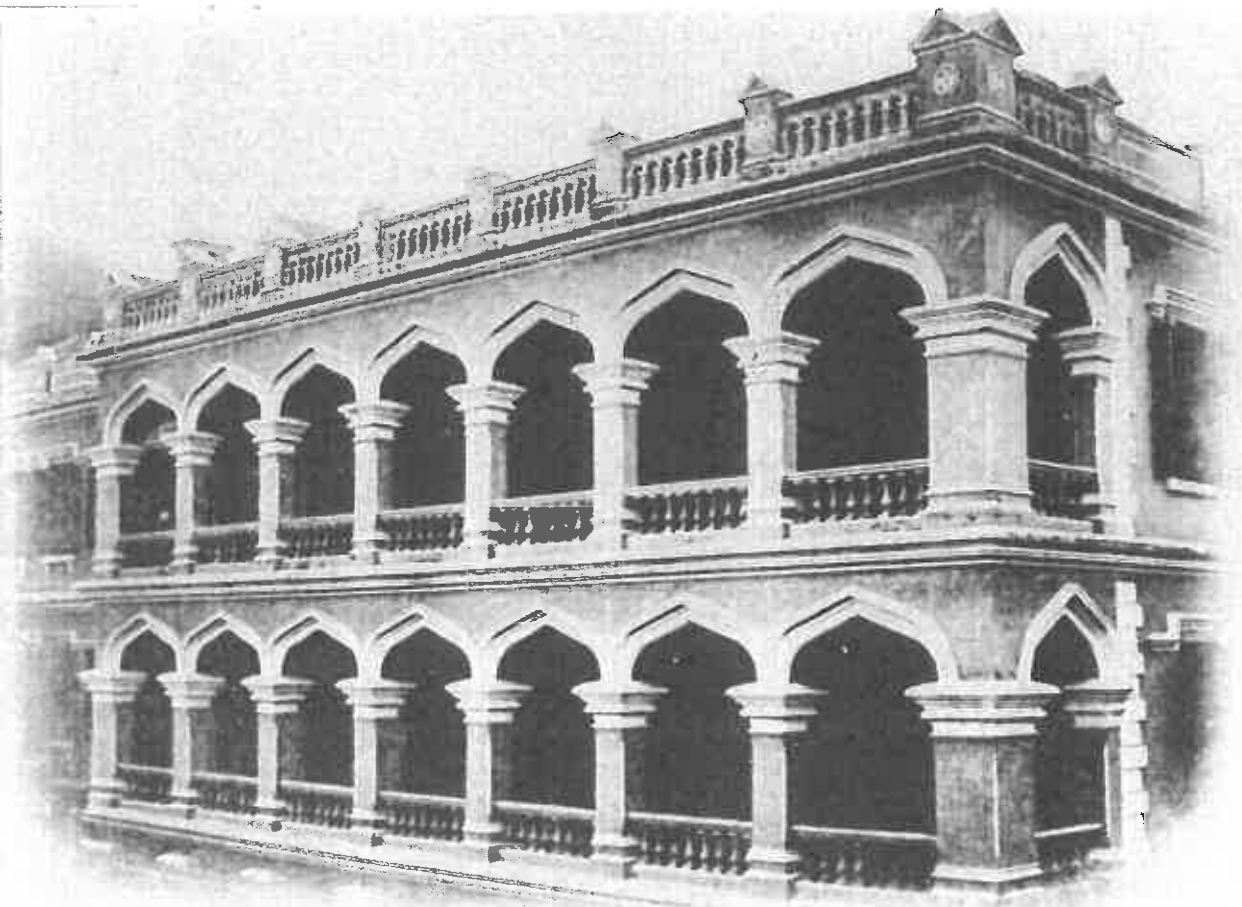
ca 1883 ?



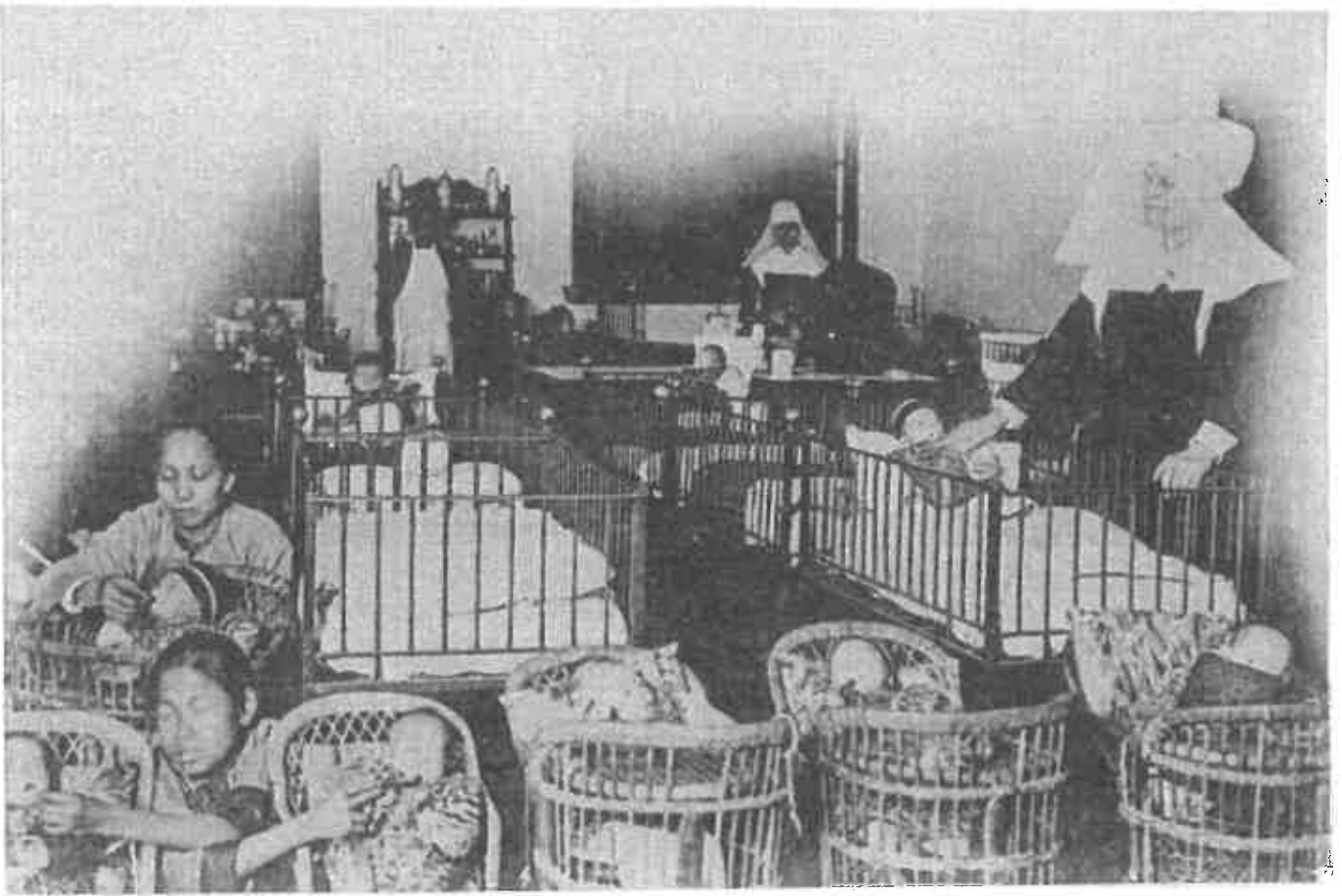
CONVENT + SCHOOL
(facing the sea)



ORPHANAGE
(right side-chapel)



ORPHANAGE



Older orphans help
care for the babies

Wet nurses with
the babies





Chine.



Sœurs de Saint-Paul, de Chartres

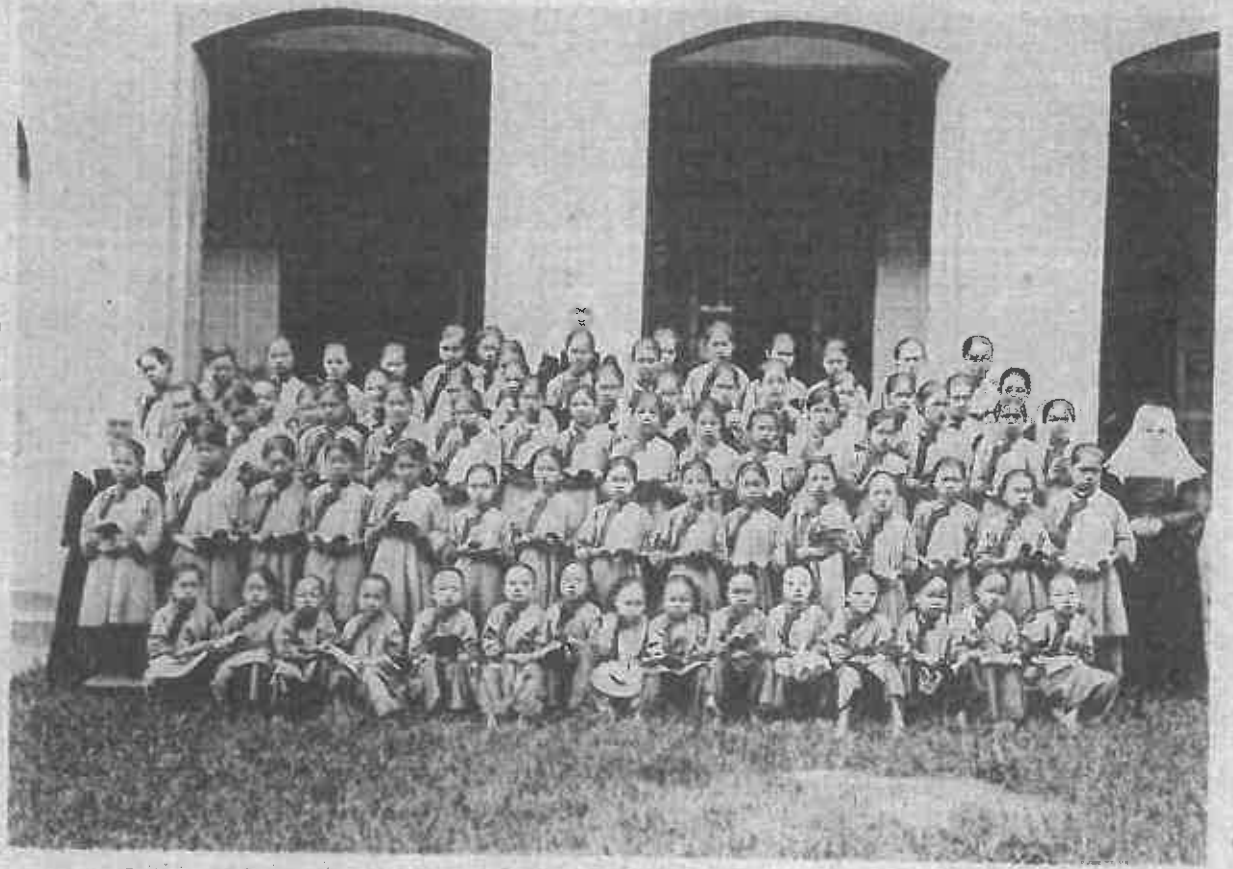
Chine



Sœurs de Saint-Paul, de Chartres

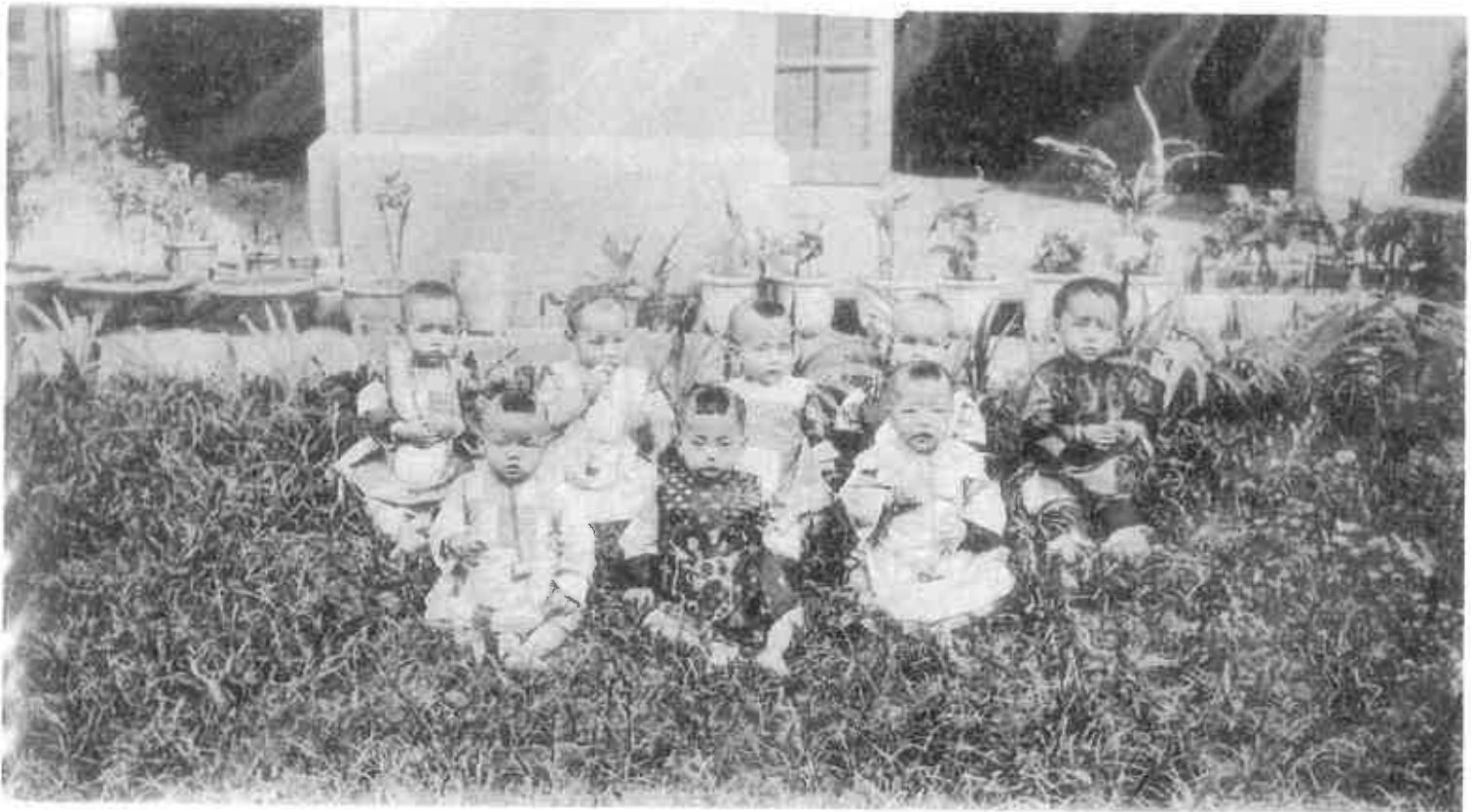
Sewing class

Sold by Orca & Co., Hongkong, China.



Life in French Convent. *Asile de la Sainte Enfance, Hongkong.*
Reading class

With different
hairstyle

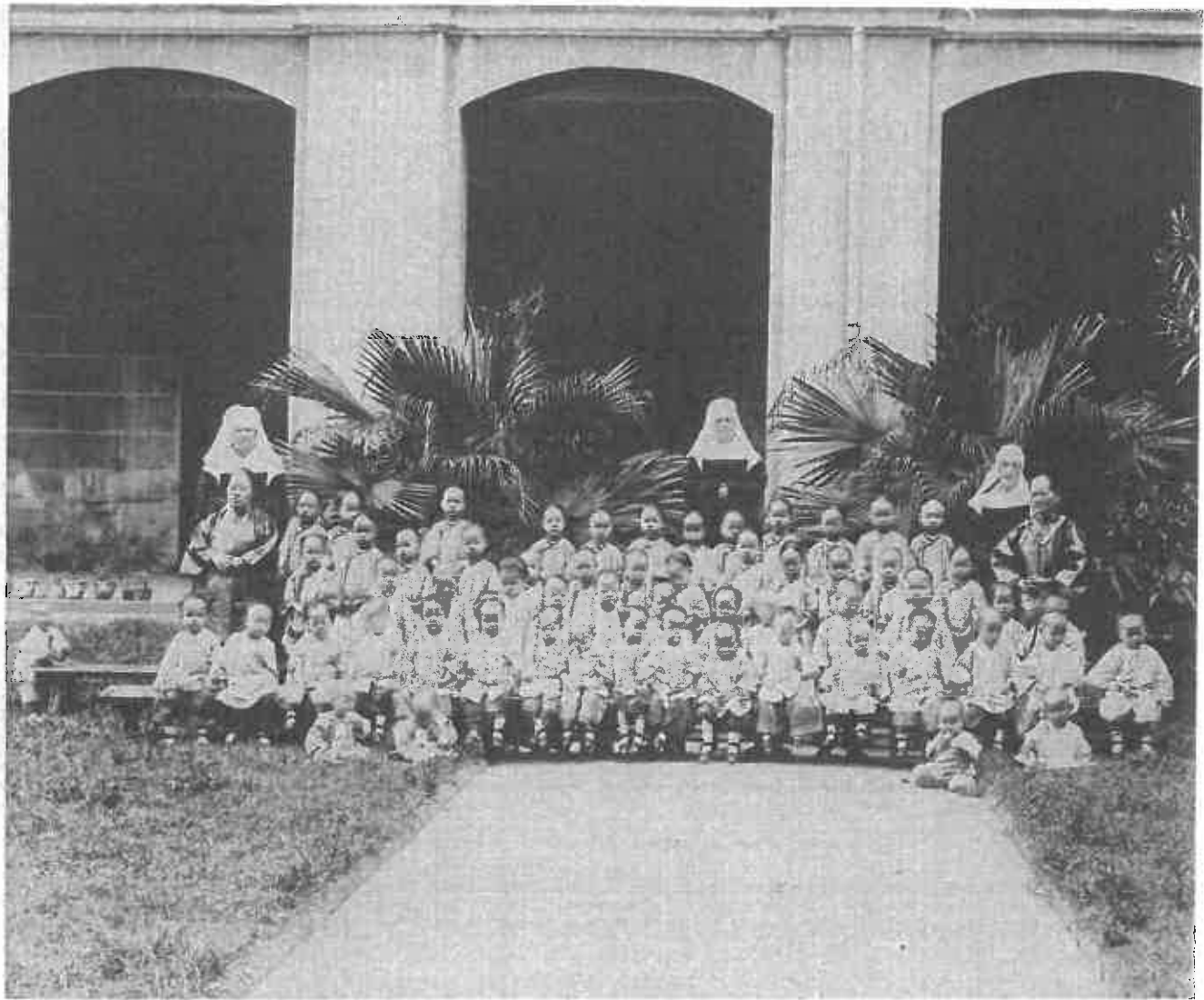




Sewing class
(ca 1900s)







4 5

r

2

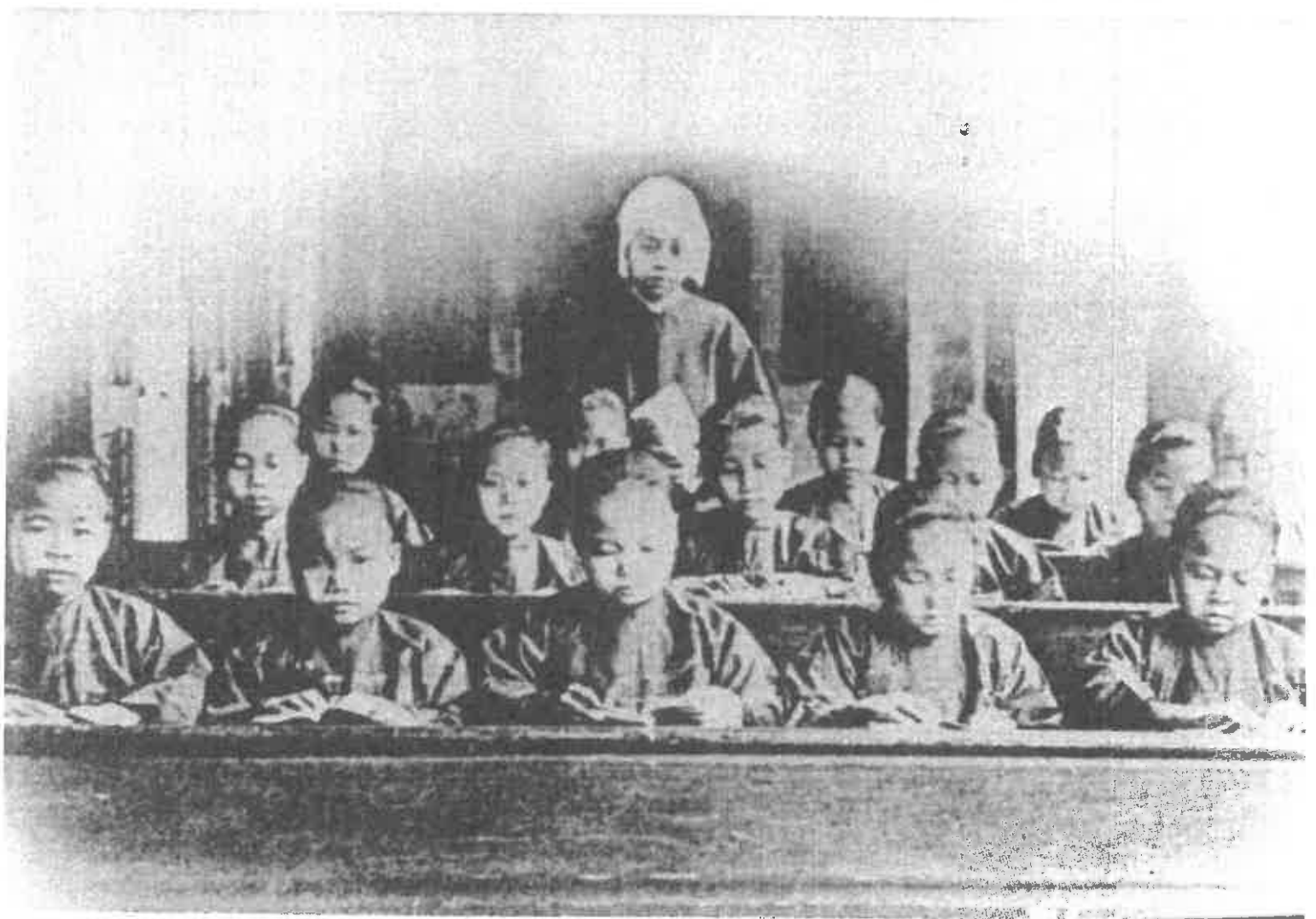
Wet nurse + baby

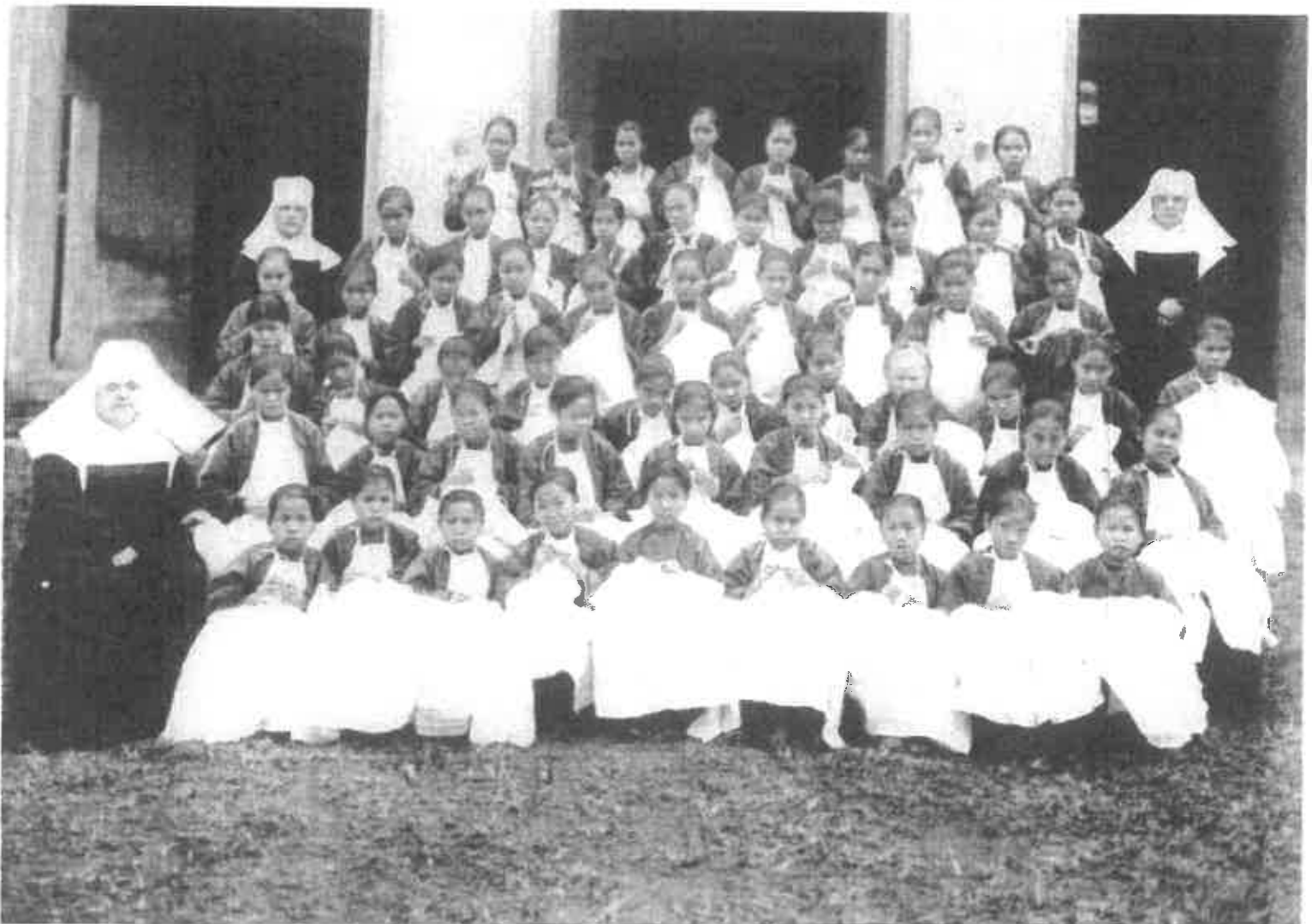
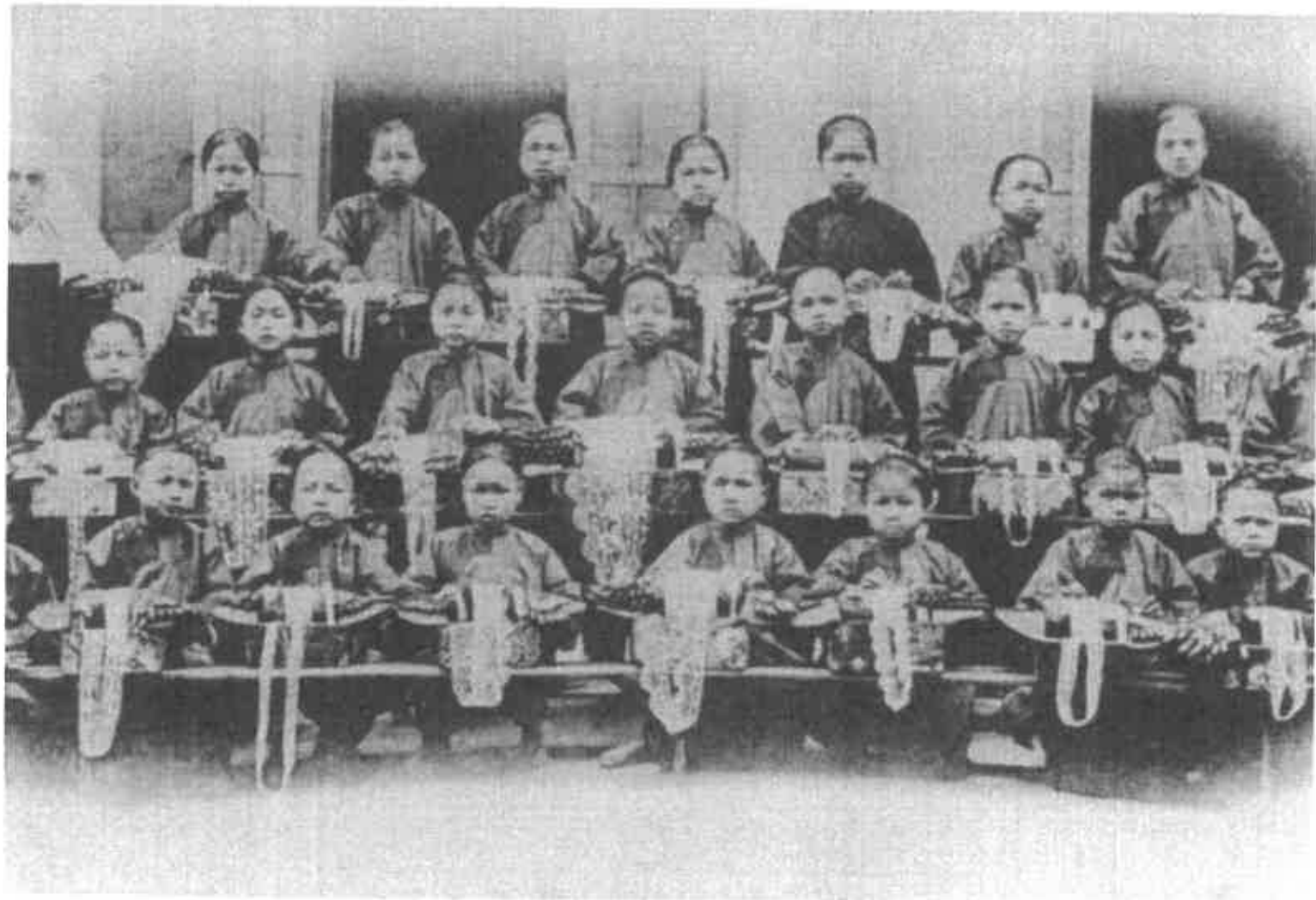


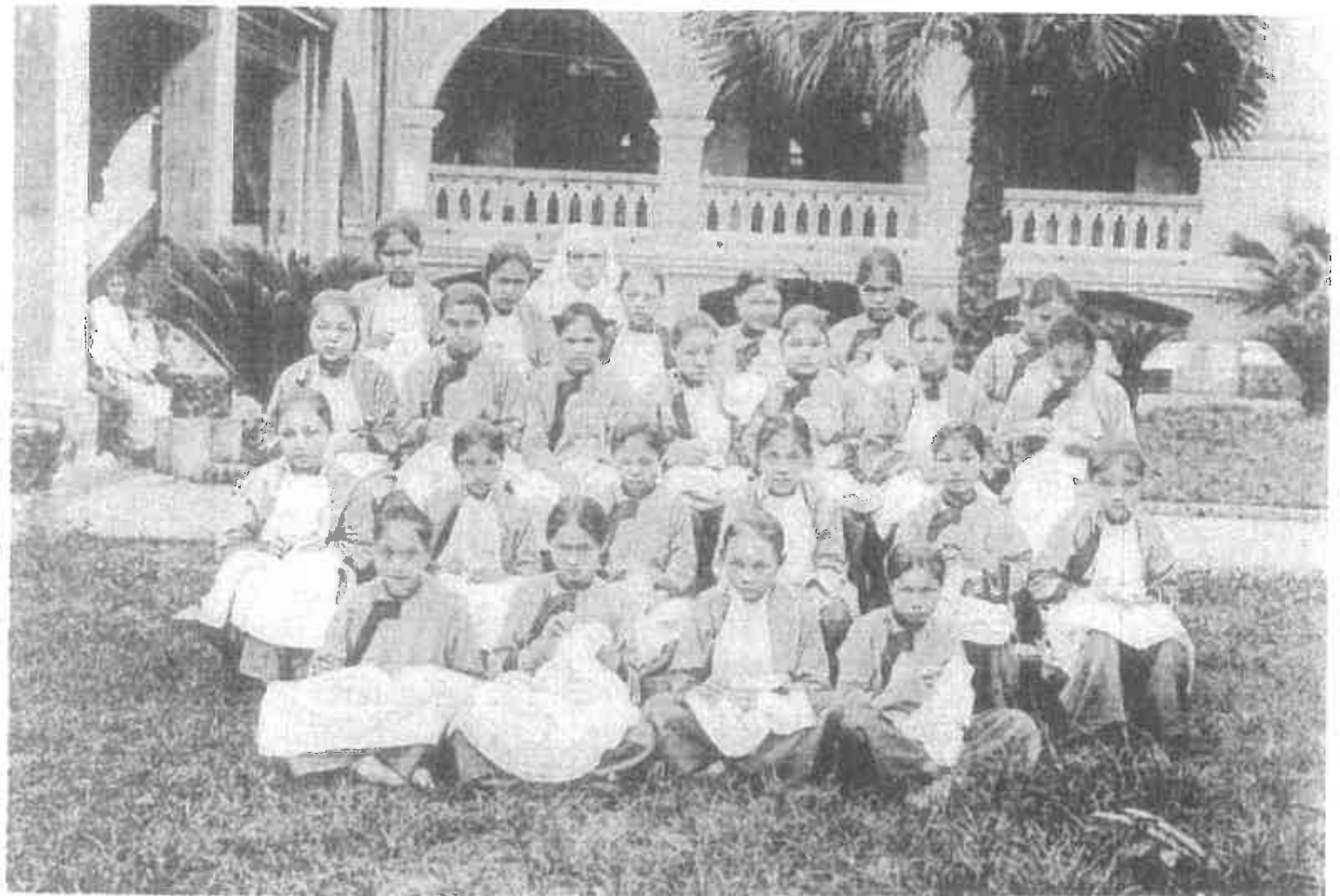
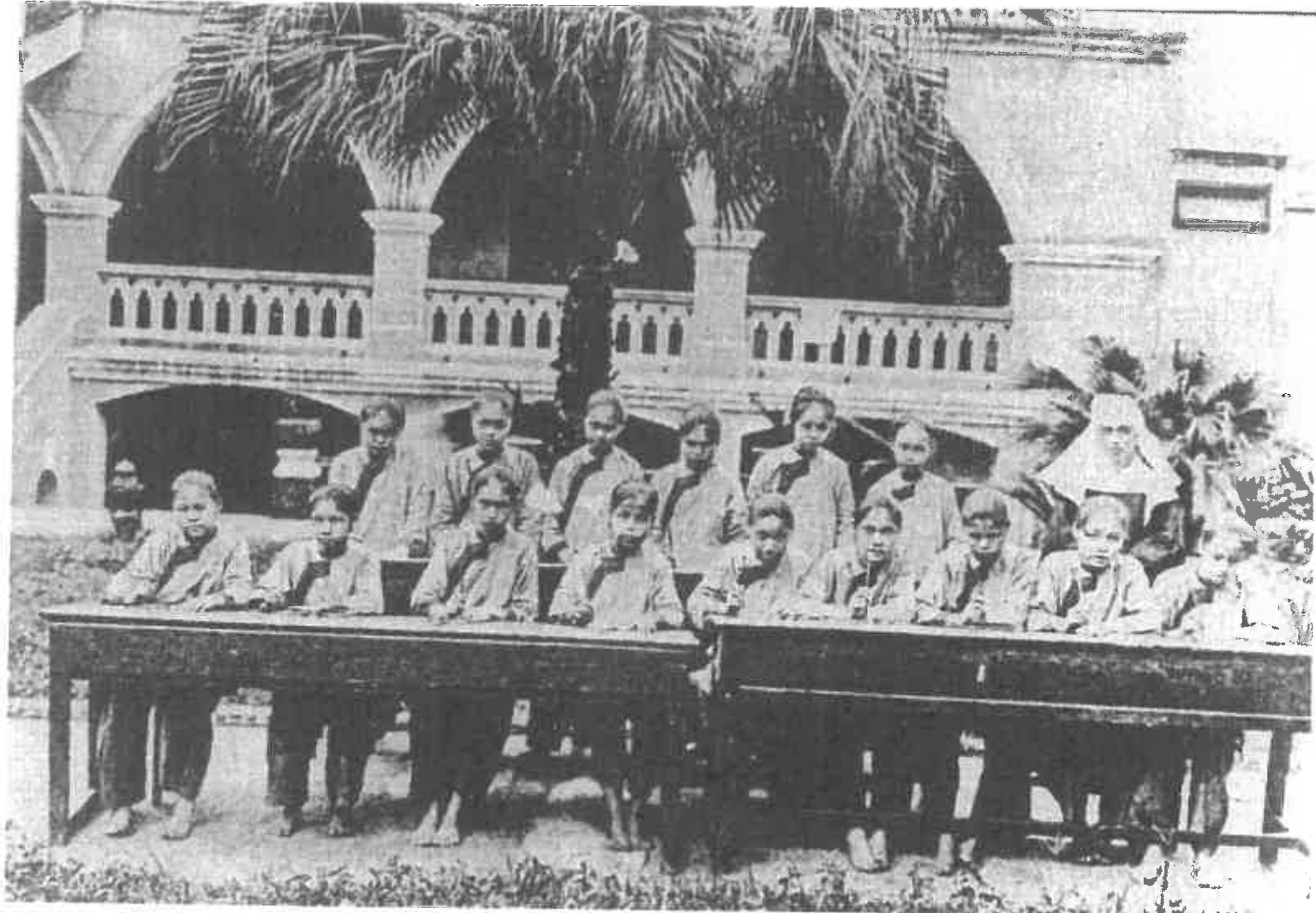
role, :
to
ti



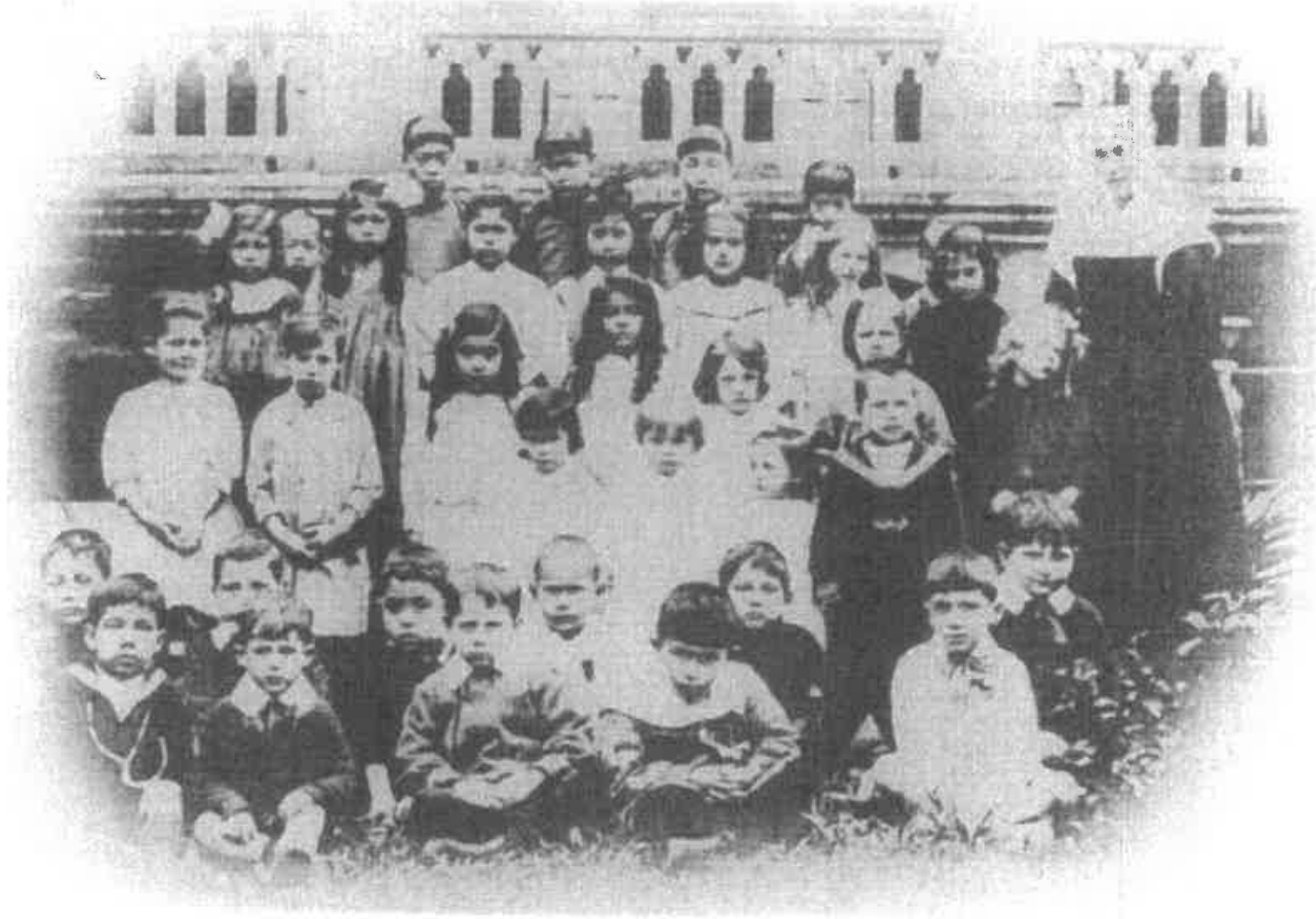
When of age, marriage was arranged for them with partners introduced by priests

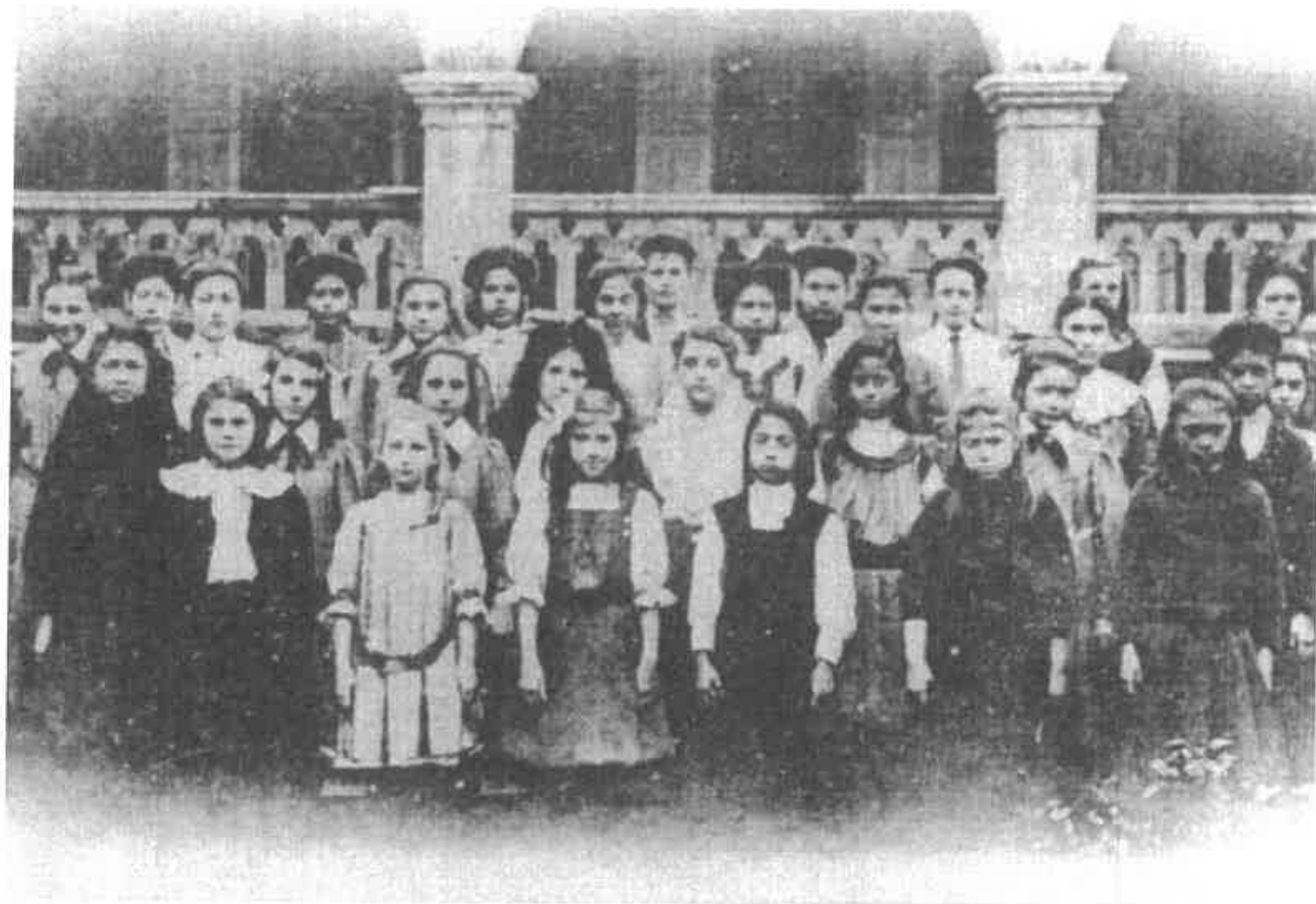


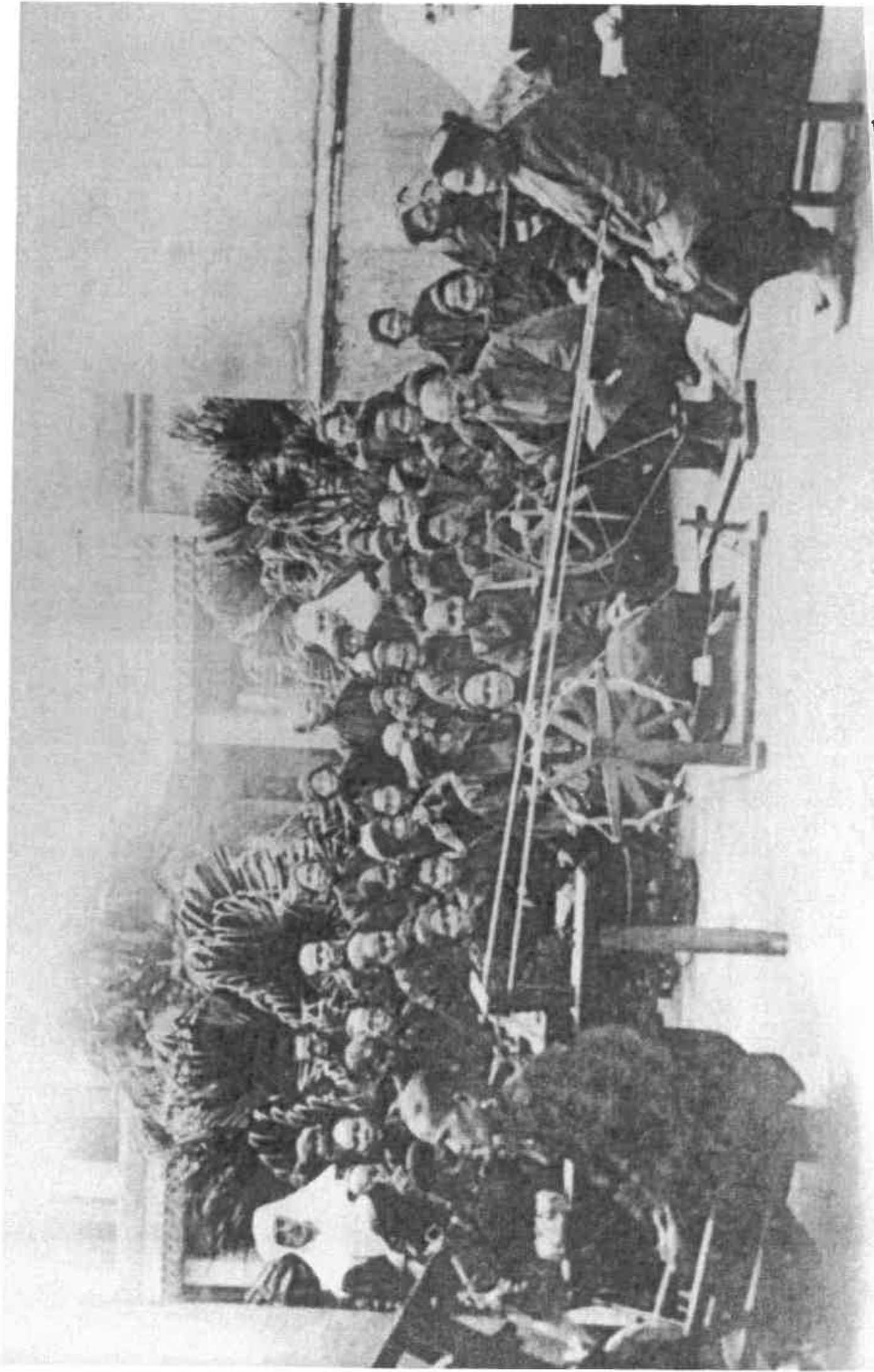




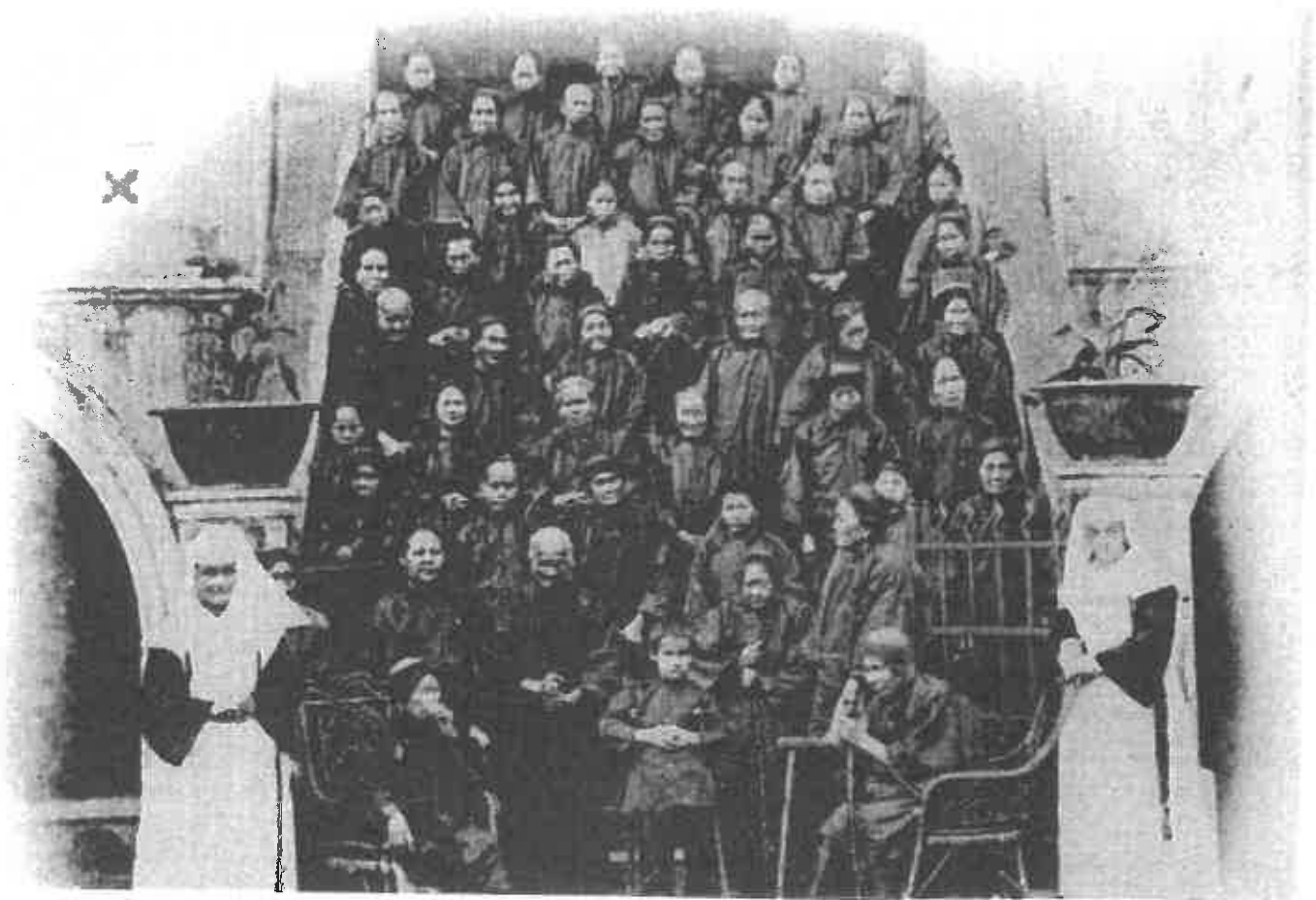
School French Convent, Isle de la Sainte Enfoncé, Monikony.







ALMSHOUSE
After the 1894 plague, the
ASILE accepted old people.



Maile de la Sainte Enfant Hospice (old aged women) - about 93 years of age

Hospital for Chinese
Women + Babies
[1 Jan. 1898]

